

ENVIRONMENTAL EVALUATION NOTIFICATION FORM

Grantee/Contractor Laboratory: Princeton University/Princeton Plasma Physics Laboratory (PPPL)

Project/Activity Title: Tritium System Demolition & Disposal (revised 11/30/2020)

CH NEPA Tracking No.: _____ Type of Funding SC

B&R Code: _____ Total Estimated Cost: \$ 33.4 million

DOE Cognizant Secretarial Officer (CSO): Marc Jones

Contractor Project Manager: _____ Signature: _____

Date: _____

Contractor NEPA Reviewer: Dorothy M. Strauss Signature: _____

Date: _____

I. Description of Proposed Action:

The tritium processing systems and neutral beam injection equipment used during the 1990's Deuterium-Tritium (D-T) experiments for the Tokamak Fusion Test Reactor (TFTR) are aging, contain about 19,000 Curies of residual tritium in components, and are not planned for future use. This project would remove and dispose of the components of these tritium systems, including glove boxes, fume hoods, gas holding tanks, tritium purification system (TPS) process piping, (all located in the tritium area in the D-Site basement), one neutral beam box (of three located in the TFTR test cell), contaminated HVAC ductwork (from both locations), and control room components (located separately in the D-Site basement). Excepting the control room components, which would be recycled or disposed of as domestic waste, these components bear low levels of tritium contamination and would be disposed of as low-level radioactive waste at a DOE-approved disposal site. The two remaining neutral beam boxes would be moved out of the TFTR Test Cell and exhausted to the existing monitored D-Site stack. Parts from these retained neutral beam boxes would remain stored within the boxes. Removal activities are anticipated to result in airborne tritium releases to the existing monitored stack that are expected to be less than 100 Curies/year, and tritium releases of less than 1 Curie/year in liquid form through the existing PPPL liquid effluent collection tank (LECT) system to the municipal sanitary sewer system. These releases would result in a peak annual dose to the maximum exposed individual (MEI) of <0.1 mrem/year. A theoretical release of the entire tritium inventory of 19,000 Curies would result in a peak dose to the maximum exposed individual of 30 mrem. These doses are small fractions of the average annual background dose of 600 mrem/year from all radiation sources.

This project would result in a savings of approximately \$350,000/year in operational costs for radiological monitoring, compliance, and oversight while making available approximately 5,000 GSF of high value research space. This work would be conducted by subcontracted industry experts subject to PPPL oversight.

II. Description of Affected Environment: D-Site, TFTR Test Cell and Basement (see attached maps and figures).

PPPL is located on Princeton University's James Forrestal Campus in Plainsboro Township, Middlesex County (central New Jersey), adjacent to the municipalities of

Princeton, Kingston, East and West Windsor, and Cranbury, NJ. It occupies approximately 90.83 acres in the areas known as “C- and D-Sites.” PPPL has operated on the current site since 1959. The closest urban centers are New Brunswick, 14 miles (22.5 km) to the northeast, and Trenton, 12 miles (19 km) to the southwest. Within a 50-mile (80 km) radius are the major urban centers of New York City, Philadelphia, and Newark. Princeton University’s main campus is approximately three miles west of the site, primarily located within the borough of Princeton.

The estimated resident population within 10 miles (16 km) of PPPL is approximately 500,000. The total estimated population within a 50-mile radius (80km) of PPPL is approximately 17,735,164.

Surrounding the site are lands of preserved and undisturbed areas including upland forest, wetlands, open grassy areas, and a minor stream, Bee Brook, which flows along PPPL’s eastern boundary. These areas are designated as open space in the James Forrestal Campus (JFC) site development plan.

The climate of central New Jersey is classified as mid-latitude, rainy climate with mild winters, hot summers, and no dry season. Temperatures may range from below zero to above 100 degrees Fahrenheit (°F) (-17.8° Celsius (C) to 37.8° C); extreme temperatures typically occur once every five years. Approximately half the year, from late April until mid-October, the days are freeze-free. Normally the climate is moderately humid with a total average precipitation of about 46 inches (116 cm) evenly distributed throughout the year.

III. **Potential Environmental Effects:** (Attach explanation for each "yes" response, and "no" responses if additional information is available and could be significant in the decision-making process.)

A. Sensitive Resources: Will the proposed action result in changes and/or disturbances to any of the following resources?

	<u>Yes/No</u>
1. Threatened/Endangered Species and/or Critical Habitats	1. No
2. Other Protected Species (e.g. Burros, Migratory Birds)	2. No
3. Wetlands	3. No
4. Archaeological/Historic Resources	4. No
5. Prime, Unique or Important Farmland	5. No
6. Non-Attainment Areas	6. No
7. Class I Air Quality Control Region	7. No
8. Special Sources of Groundwater (e.g. Sole Source Aquifer)	8. No
9. Navigable Air Space	9. No
10. Coastal Zones	10. No
11. Areas w/ Special National Designation (e.g. National Forests, Parks, Trails)	11. No
12. Floodplain	12. No

B. Regulated Substances/Activities: Will the proposed action involve any of the following regulated substances or activities?

	<u>Yes/No</u>
13. Clearing or Excavation (indicate if greater than 1 acre [43,560 sq. ft.]; if more than 5,000 sq. ft., a Soil Erosion / Sediment Control Permit may be required from Freehold Soil Conservation District.) <i>Note: Soil disturbance includes clearing, grading, excavation, storage, and filling. Soil erosion and sediment control permits required if $\geq 5,000$ sq. ft.</i> <i>Note: Excavations expected to encounter ground water may require a permit.</i>	13. No
14. Dredge or Fill (under Clean Water Act section 404; indicate if greater than 1 acre)	14. No
15. Noise (in excess of regulations)	15. No
16. Asbestos Removal <i>Asbestos-containing materials including approx. 1.1 tons of floor tiles from the tritium area would be removed and disposed of by an asbestos-certified contractor.</i>	16. Yes
17. PCBs	17. No
18. Import, Manufacture or Processing of Toxic Substances	18. No
19. Chemical Storage/Use <i>Standard chemicals (alcohol, lubricating oils to support cutting equipment, etc.) would be used with SDSs provided to Industrial Hygiene at least 24 hours prior to first use.</i>	19. Yes
20. Pesticide Use	20. No
21. Hazardous, Toxic, or Criteria Pollutant Air Emissions <i>Anticipated releases to the monitored stack are expected to be ~ 10-100 Curies/year.</i>	21. Yes
22. Liquid Effluent <i>Liquid effluent collection tank (LECT) releases to the municipal sanitary sewer system would be controlled to remain at less than 1 Curie/year, which is less than allowable limits of the NJ Dept. of Environmental Protection.</i>	22. Yes
23. Underground Injection	23. No
24. Hazardous Waste <i>In addition to the floor tiles noted above, installed batteries, oil, and other components removed from the tritium system may be disposed of as hazardous waste according to current procedure.</i>	24. Yes
25. Underground Storage Tanks	25. No
26. Radioactive (AEA) Mixed Waste	26. No
27. Radioactive Waste <i>Approximately 99.5 tons of tritium system components and piping, 80 tons of material from the neutral beam boxes, and .5 tons of galvanized sheet metal ductwork would be disposed of according to current procedure as low-level radioactive waste at a DOE-approved disposal site.</i>	27. Yes
28. Radiation Exposures <i>Tritium contamination is present in the tritium system components and piping. The total amount of tritium on-site is estimated to be ~ 19,000 Curies. Work in the TFTR test cell may expose workers to low levels of tritium or contamination. Workers would adhere to provisions in the approved Radiation Protection Program and PPPL Health Physics personnel would provide monitoring and oversight. Radiation exposures would be managed well below the PPPL Administrative Control Level of 1,000 mrem per calendar year per person and 600 mrem per calendar quarter.</i>	28. Yes

C. Other Relevant Disclosures. Will the proposed action involve the following?

Yes/No

- | | | |
|-----|--|--------|
| 29. | A threatened violation of ES&H regulations/permit requirements
<i>The requirements of 10CFR851 (as implemented under the DOE-approved PPPL Worker Safety and Health Program) would be applied to work at PPPL under this proposed action. The subcontractor would be required to provide a Health and Safety Plan and Waste Management Plan for PPPL review and approval.</i> | 29. No |
| 30. | Siting/Construction/Major Modification of Waste Recovery, or TSD Facilities | 30. No |
| 31. | Disturbance of Pre-existing Contamination
<i>Note: Excavations that encounter contaminated ground water require a permit.</i> | 31. No |
| 32. | New or Modified Federal/State Permits | 32. No |
| 33. | Public controversy | 33. No |
| 34. | Action/involvement of Another Federal Agency (e.g. license, funding, approval) | 34. No |
| 35. | Action of a State Agency in a State with NEPA-type law.
(Does the State Environmental Quality Review Act Apply?) | 35. No |
| 36. | Public Utilities/Services | 36. No |
| 37. | Depletion of a Non-Renewable Resource | 37. No |

IV. **Section D Determination:** Is the project/activity appropriate for a determination under Subpart D of the DOE NEPA Regulations for compliance with NEPA?

DOE-PSO NEPA Compliance Officer (NCO) Review:

Concurrence with Proposed Class of Action Recommended

CX EA EIS

Categories: B1.23 (Demolition and disposal of buildings), B1.16 (Asbestos removal)

For Categorical Exclusions (CXs):

A. The proposed action fits within a class of actions that is listed in Appendix A or B to Subpart D.

For classes of actions listed in Appendix B, the following conditions are integral elements; i.e., to fit within a class, the proposal must not:

- 1) Threaten a violation of applicable statutory, regulatory, or permit requirements for environment, safety, and health, including DOE and/or Executive Orders;
- 2) Require siting, construction, or major expansion of waste storage, disposal, recovery, or treatment facilities, but may include such categorically excluded facilities;
- 3) Disturb hazardous substances, pollutants, contaminants, or CERCLA-excluded petroleum and natural gas products that pre-exist in the environment such that there would be uncontrolled or unpermitted releases; or
- 4) Adversely affect environmentally sensitive resources.
- 5) Involve genetically engineered organisms, synthetic biology, governmentally designated noxious weeds, or invasive species, unless the proposed activity would be contained or confined in a manner designed and operated to prevent unauthorized release into the environment and conducted in accordance with applicable requirements, such as those of the Department of Agriculture, the Environmental

Protection Agency, and the National Institutes of Health.

B. There are no extraordinary circumstances related to the proposal that may affect the significance of the environmental effects of the proposal; and

C. The proposal is not "connected" to other actions with potentially significant impacts, is not related to other proposed actions with cumulatively significant impacts, and is not precluded by 40 CFR 1506.1 or 10 CFR 1021.211.

V. **DOE Recommendation Approval:**

PSO Staff: Tracy Estes Signature: _____

Date: _____

SC GLD: Michael M. McCann Signature: _____

Date: _____

VI. **NEPA Compliance Officer Subpart D CX Determination and Approval:**

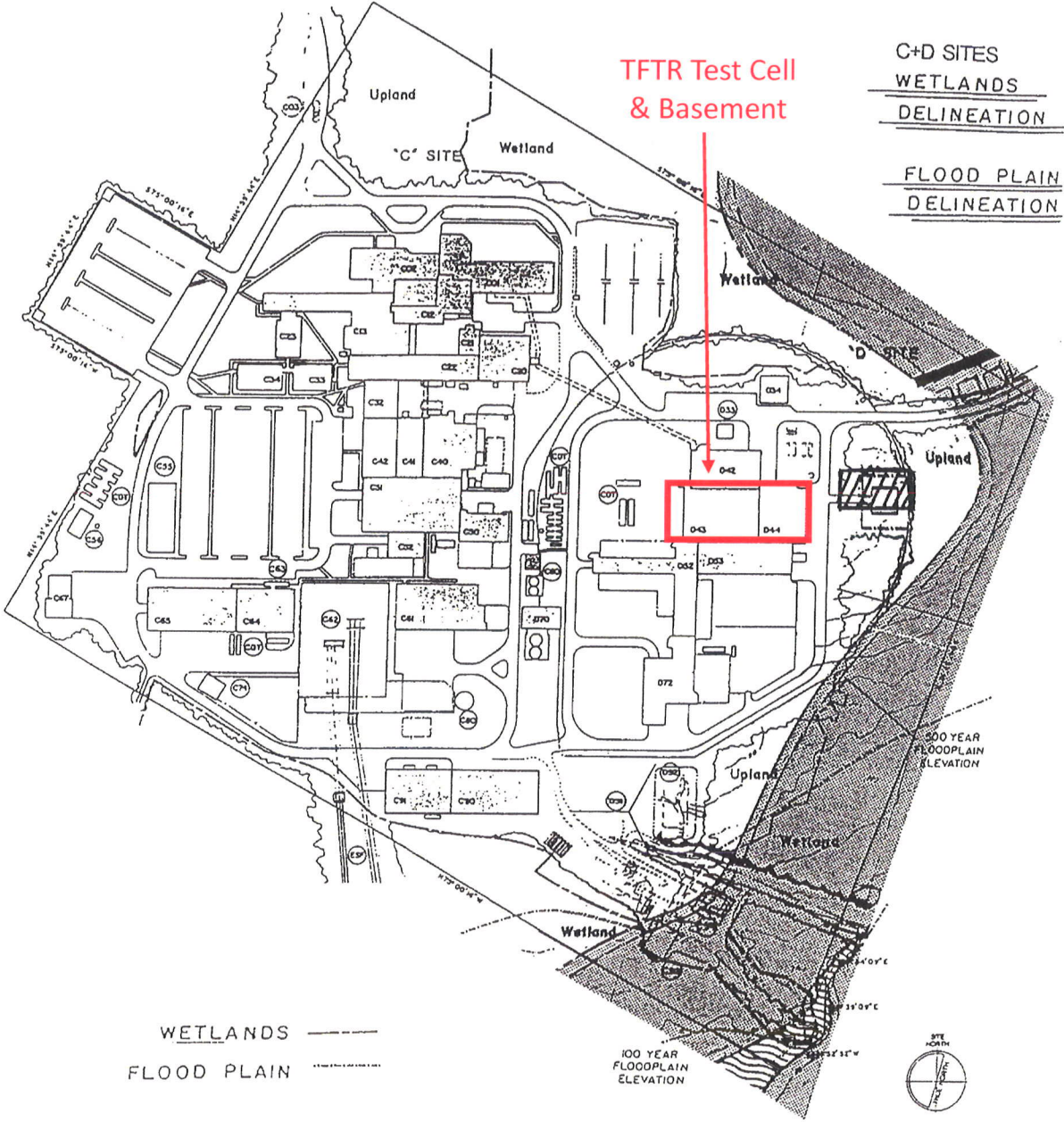
Based on my review of information conveyed to me and in my possession (or attached) concerning the proposed action, as NEPA Compliance Officer, I have determined that the proposed action fits within the specified class of actions, the other regulatory requirements set forth above are met, and the proposed action is hereby categorically excluded from further NEPA review.

PSO NCO: Peter R. Siebach Signature: _____

Date: _____

PPPL	PRINCETON PLASMA PHYSICS LABORATORY	PROCEDURE	No. ESH-014 Rev 5 Attachment 4
	Map (Floodplains and Wetlands)		page 1 of 1

TCR-ESH-014,R5-001



SHADE INDICATES STREAM PROTECTION CORRIDOR PER PRINCETON FORRESTAL CENTER STORMWATER MANAGEMENT PLAN, 1980

0 100 300 600 FT.
SITE PLAN
PRINCETON UNIVERSITY
PLASMA PHYSICS LABORATORY

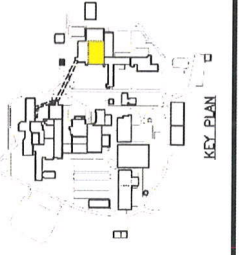
Tritium System Demolition and Disposal

TFTR Test Cell

NO.	REVISION	BY	CH	SUP	APPROVED	DATE
1	REVISED SQ. FT. PER ECN-5342	JUN	JS		EJ	03/21/08
2	UPDATE AD-300 DRAWINGS TO REFLECT ACTUAL CONDITIONS PER ECN-7424	TK	DS	LM	MV	07/22/15
3	ADDED FIRE BARRIER(S) PER ECN-7876	TK	SD	UM	MD	01/04/17



PRINCETON PLASMA PHYSICS LABORATORY PRINCETON UNIVERSITY	
C & D SITES BUILDING FLOOR PLANS EXPERIMENTAL AREA, 1ST FLOOR, D4.3	
DIV: P.M. & E.	DATE: 01/14/2002 CADD FILE: 39AD3056.DWG
ENG: C. POTENSKY	APPROVED:
DNW-J. SIEGEL	
CHK: S. FLOHR	CHK SUPV CP
	B-AD-300
	SHEET 56
	REV 3



EXPERIMENTAL AREA, 1st FLOOR, D4.3
 SCALE: 1/4" = 1'-0"

Tritium System Demolition and Disposal
Figure 1

<ul style="list-style-type: none"> HIGH BAY GENERAL DRY COMMON HALLS/WALLS 	<ul style="list-style-type: none"> 24,539 SQ. FT. 1,860 SQ. FT. 2,856 SQ. FT. 3,566 SQ. FT. 32,821 SQ. FT. 	<ul style="list-style-type: none"> GSE USE 	<ul style="list-style-type: none"> 37,821 29,255 26,399
--	---	--	--

RELEASED FOR FABRICATION/INSTALLATION (DATE: 01/14/2002)

1. GFFELS, A-107

M. ONO

FB D43D52_01

FB D43D53_01

D42 106

D43 119

D44 110

D44 113

D44 118

D44 123

D44 126

D44 129

D44 132

D44 135

D44 138

D44 141

D44 144

D44 147

D44 150

D44 153

D44 156

D44 159

D44 162

D44 165

D44 168

D44 171

D44 174

D44 177

D44 180

D44 183

D44 186

D44 189

D44 192

D44 195

D44 198

D44 201

D44 204

D44 207

D44 210

D44 213

D44 216

D44 219

D44 222

D44 225

D44 228

D44 231

D44 234

D44 237

D44 240

D44 243

D44 246

D44 249

D44 252

D44 255

D44 258

D44 261

D44 264

D44 267

D44 270

D44 273

D44 276

D44 279

D44 282

D44 285

D44 288

D44 291

D44 294

D44 297

D44 300

D44 303

D44 306

D44 309

D44 312

D44 315

D44 318

D44 321

D44 324

D44 327

D44 330

D44 333

D44 336

D44 339

D44 342

D44 345

D44 348

D44 351

D44 354

D44 357

D44 360

D44 363

D44 366

D44 369

D44 372

D44 375

D44 378

D44 381

D44 384

D44 387

D44 390

D44 393

D44 396

D44 399

D44 402

D44 405

D44 408

D44 411

D44 414

D44 417

D44 420

D44 423

D44 426

D44 429

D44 432

D44 435

D44 438

D44 441

D44 444

D44 447

D44 450

D44 453

D44 456

D44 459

D44 462

D44 465

D44 468

D44 471

D44 474

D44 477

D44 480

D44 483

D44 486

D44 489

D44 492

D44 495

D44 498

D44 501

D44 504

D44 507

D44 510

D44 513

D44 516

D44 519

D44 522

D44 525

D44 528

D44 531

D44 534

D44 537

D44 540

D44 543

D44 546

D44 549

D44 552

D44 555

D44 558

D44 561

D44 564

D44 567

D44 570

D44 573

D44 576

D44 579

D44 582

D44 585

D44 588

D44 591

D44 594

D44 597

D44 600

D44 603

D44 606

D44 609

D44 612

D44 615

D44 618

D44 621

D44 624

D44 627

D44 630

D44 633

D44 636

D44 639

D44 642

D44 645

D44 648

D44 651

D44 654

D44 657

D44 660

D44 663

D44 666

D44 669

D44 672

D44 675

D44 678

D44 681

D44 684

D44 687

D44 690

D44 693

D44 696

D44 699

D44 702

D44 705

D44 708

D44 711

D44 714

D44 717

D44 720

D44 723

D44 726

D44 729

D44 732

D44 735

D44 738

D44 741

D44 744

D44 747

D44 750

D44 753

D44 756

D44 759

D44 762

D44 765

D44 768

D44 771

D44 774

D44 777

D44 780

D44 783

D44 786

D44 789

D44 792

D44 795

D44 798

D44 801

D44 804

D44 807

D44 810

D44 813

D44 816

D44 819

D44 822

D44 825

D44 828

D44 831

D44 834

D44 837

D44 840

D44 843

D44 846

D44 849

D44 852

D44 855

D44 858

D44 861

D44 864

D44 867

D44 870

D44 873

D44 876

D44 879

D44 882

D44 885

D44 888

D44 891

D44 894

D44 897

D44 900

D44 903

D44 906

D44 909

D44 912

D44 915

D44 918

D44 921

D44 924

D44 927

D44 930

D44 933

D44 936

D44 939

D44 942

D44 945

D44 948

D44 951

D44 954

D44 957

D44 960

D44 963

D44 966

D44 969

D44 972

D44 975

D44 978

D44 981

D44 984

D44 987

D44 990

D44 993

D44 996

D44 999

D44 1002

D44 1005

D44 1008

D44 1011

D44 1014

D44 1017

D44 1020

D44 1023

D44 1026

D44 1029

D44 1032

D44 1035

D44 1038

D44 1041

D44 1044

D44 1047

D44 1050

D44 1053

D44 1056

D44 1059

D44 1062

D44 1065

D44 1068

D44 1071

D44 1074

D44 1077

D44 1080

D44 1083

D44 1086

D44 1089

D44 1092

D44 1095

D44 1098

D44 1101

D44 1104

D44 1107

D44 1110

D44 1113

D44 1116

D44 1119

D44 1122

D44 1125

D44 1128

D44 1131

D44 1134

D44 1137

D44 1140

D44 1143

D44 1146

D44 1149

D44 1152

D44 1155

D44 1158

D44 1161

D44 1164

D44 1167

D44 1170

D44 1173

D44 1176

D44 1179

D44 1182

D44 1185

D44 1188

D44 1191

D44 1194

D44 1197

D44 1200

D44 1203

D44 1206

D44 1209

D44 1212

D44 1215

D44 1218

D44 1221

D44 1224

D44 1227

D44 1230

D44 1233

D44 1236

D44 1239

D44 1242

D44 1245

D44 1248

D44 1251

D44 1254

D44 1257

D44 1260

D44 1263

D44 1266

D44 1269

D44 1272

D44 1275

D44 1278

D44 1281

D44 1284

D44 1287

D44 1290

D44 1293

D44 1296

D44 1299

D44 1302

D44 1305

D44 1308

D44 1311

D44 1314

D44 1317

D44 1320

D44 1323

D44 1326

D44 1329

D44 1332

D44 1335

D44 1338

D44 1341

D44 1344

D44 1347

D44 1350

D44 1353

D44 1356

D44 1359

D44 1362

D44 1365

D44 1368

D44 1371

D44 1374

D44 1377

D44 1380

D44 1383

D44 1386

D44 1389

D44 1392

D44 1395

D44 1398

D44 1401

D44 1404

D44 1407

D44 1410

D44 1413

D44 1416

D44 1419

D44 1422

D44 1425

D44 1428

D44 1431

D44 1434

D44 1437

D44 1440

D44 1443

D44 1446

D44 1449

D44 1452

D44 1455

D44 1458

D44 1461

D44 1464

D44 1467

D44 1470

D44 1473

D44 1476

D44 1479

D44 1482

D44 1485

D44 1488

D44 1491

D44 1494

D44 1497

D44 1500

D44 1503

D44 1506

D44 1509

D44 1512

D44 1515

D44 1518

D44 1521

D44 1524

D44 1527

D44 1530

D44 1533

D44 1536

D44 1539

D44 1542

D44 1545

D44 1548

D44 1551

D44 1554

D44 1557

D44 1560

D44 1563

D44 1566

D44 1569

D44 1572

D44 1575

D44 1578

D44 1581

D44 1584

D44 1587

D44 1590

D44 1593

D44 1596

D44 1599

D44 1602

D44 1605

D44 1608

D44 1611

D44 1614

D44 1617

D44 1620

D44 1623

D44 1626

D44 1629

D44 1632

D44 1635

D44 1638

D44 1641

D44 1644

D44 1647

D44 1650

D44 1653

D44 1656

D44 1659

D44 1662

D44 1665

D44 1668

D44 1671

D44 1674

D44 1677

D44 1680

D44 1683

D44 1686

D44 1689

D44 1692

D44 1695

D44 1698

D44 1701

D44 1704

D44 1707

D44 1710

D44 1713

D44 1716

D44 1719

D44 1722

D44 1725

D44 1728

D44 1731

D44 1734

D44 1737

D44 1740

D44 1743

D44 1746

D44 1749

D44 1752

D44 1755

D44 1758

D44 1761

D44 1764

D44 1767

D44 1770

D44 1773

D44 1776

D44 1779

D44 1782

D44 1785

D44 1788

D44 1791

D44 1794

D44 1797

D44 1800

D44 1803

D44 1806

D44 1809

D44 1812

D44 1815

D44 1818

D44 1821

D44 1824

D44 1827

D44 1830

D44 1833

D44 1836

D44 1839

D44 1842

D44 1845

D44 1848

D44 1851

D44 1854

D44 1857

D44 1860

D44 1863

D44 1866

D44 1869

D44 1872

D44 1875

D44 1878

D44 1881

D44 1884

D44 1887

D44 1890

D44 1893

D44 1896

D44 1899

D44 1902

D44 1905

D44 1908

D44 1911

D44 1914

D44 1917

D44 1920

D44 1923

D44 1926

D44 1929

D44 1932

D44 1935

D44 1938

D44 1941

D44 1944

D44 1947

D44 1950

D44 1953

D44 1956

D44 1959

D44 1962

D44 1965

D44 1968

D44 1971

D44 1974

D44 1977

D44 1980

D44 1983

D44 1986

D44 1989

D44 1992

D44 1995

D44 1998

D44 2001

D44 2004

D44 2007

D44 2010

D44 2013

D44 2016

D44 2019

D44 2022

D44 2025

D44 2028

D44 2031

D44 2034

D44 2037

D44 2040

D44 2043

D44 2046

D44 2049

D44 2052

D44 2055

D44 2058

D44 2061

D44 2064

D44 2067

D44 2070

D44 2073

D44 2076

D44 2079

D44 2082

D44 2085

D44 2088

D44 2091

D44 2094

D44 2097

D44 2100

D44 2103

D44 2106

D44 2109

D44 2112

D44 2115

D44 2118

D44 2121

D44 2124

D44 2127

D44 2130

D44 2133

D44 2136

D44 2139

D44 2142

D44 2145

D44 2148

D44 2151

D44 2154

D44 2157

D44 2160

D44 2163

D44 2166

D44 2169

D44 2172

D44 2175

D44 2178

D44 2181

D44 2184

D44 2187

D44 2190

D44 2193

D44 2196

D44 2199

D44 2202

D44 2205

D44 2208

D44 2211

D44 2214

D44 2217

D44 2220

D44 2223

D44 2226

D44 2229

D44 2232

D44 2235

D44 2238

D44 2241

D44 2244

D44 2247

D44 2250

D44 2253

D44 2256

D44 2259

D44 2262

D44 2265

D44 2268

D44 2271

D44 2274

D44 2277

D44 2280

D44 2283

D44 2286

D44 2289

D44 2292

D44 2295

D44 2298

D44 2301

D44 2304

D44 2307

D44 2310

D44 2313

D44 2316

D44 2319

D44 2322

D44 2325

D44 2328

D44 2331

D44 2334

D44 2337

D44 2340

D44 2343

D44 2346

D44 2349

D44 2352

D44 2355

D44 2358

D44 2361

D44 2364

D44 2367

D44 2370

D44 2373

D44 2376

D44 2379

D44 2382

D44 2385

D44 2388

D44 2391

D44 2394

D44 2397

D44 2400

D44 2403

D44 2406

D44 2409

D44 2412

D44 2415

D44 2418

D44 2421

D44 2424

D44 2427

D44 2430

D44 2433

D44 2436

D44 2439

D44 2442

D44 2445

D44 2448

D44 2451

D44 2454

D44 2457

D44 2460

D44 2463

D44 2466

D44 2469

D44 2472

D44 2475

D44 2478

D44 2481

D44 2484

D44 2487

D44 2490

D44 2493

D44 2496

D44 2499

D44 2502

D44 2505

D44 2508

D44 2511

D44 2514

D44 2517

D44 2520

D44 2523

D44 2526

D44 2529

D44 2532

D44 2535

D44 2538

D44 2541

D44 2544

D44 2547

D44 2550

D44 2553

D44 2556

D44 2559

D44 2562

D44 2565

D44 2568

D44 2571

D44 2574

D44 2577

D44 2580

D44 2583

D44 2586

D44 2589

D44 2592

D44 2595

D44 2598

D44 2601

D44 2604

D44 2607

D44 2610

D44 2613

D44 2616

D44 2619

D44 2622

D44 2625

D44 2628

D44 2631

D44 2634

D44 2637

D44 2640

D44 2643

D44 2646

D44 2649

D44 2652

D44 2655

D44 2658

D44 2661

D44 2664

D44 2667

D44 2670

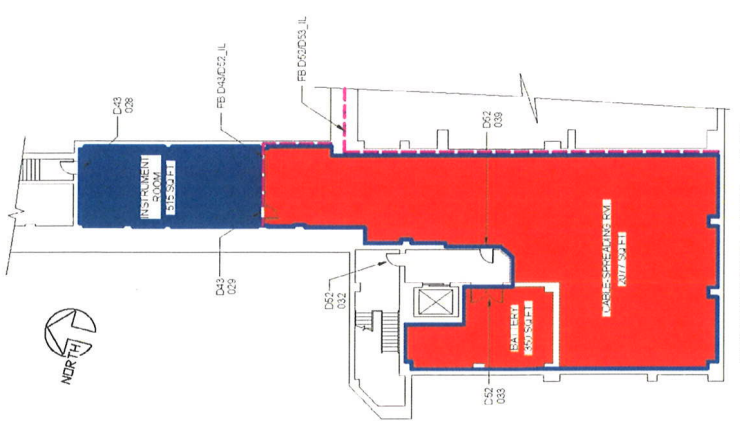
D44 2673

D44 2676

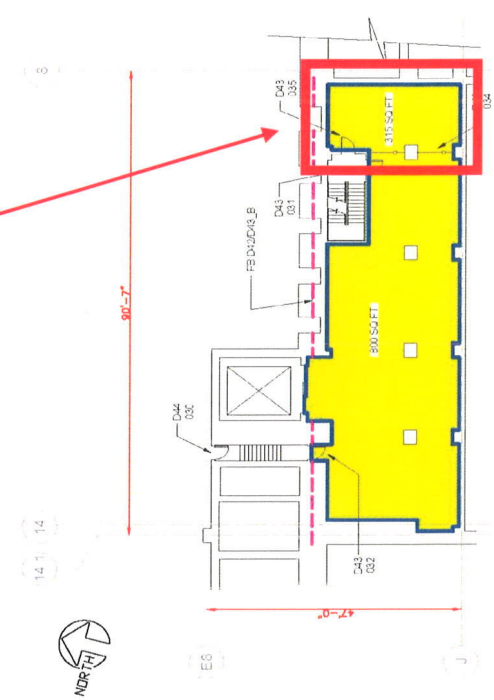
D44 2679

D44 2682

NO.	REVISION	BY	CH	SUP	APPROVED	DATE
1	REVISED SQ. FT. PER ECN-5342	JUN	JS		EJ	03/21/08
2	UPDATE US-500 DRAWINGS TO REFLECT ACTUAL CONDITIONS PER ECN-7424	TK	DS	LM	WV	08/03/15
3	ADDED FIRE BARRIERS PER ECN-7876	TK	SD	LM	MD	01/04/17



Tritium Area Control Room



L DUDEK

DATA ACQUISITION LEVEL, D43
SCALE: 1/8" = 1'-0"

INTERMEDIATE LEVEL, D43
SCALE: 1/8" = 1'-0"

RELEASED FOR FABRICATION/INSTALLATION
DATE: 10/10/2002
CADD FILE: 39AD3059.DWG

PRINCETON PLASMA PHYSICS LABORATORY PRINCETON UNIVERSITY	
C & D SITES BUILDING FLOOR PLANS DATA ACQUISITION & INTERMEDIATE FLOOR PLANS, D43	
DWG: P.M. & E.	DATE: 10/10/2002 CADD FILE: 39AD3059.DWG
ENG: C. POTENSKY	APPROVED:
DWG: J. SIEGEL	B-AD-300
CHK: S. FLOOR	CHK: SUPV CP SF
SHEET 59	REV 3



GENERAL DRY	STORAGE	USE	USE
1,115 SQ. FT.	515 SQ. FT.	1,115	1,115
3,142 SQ. FT.	2,427 SQ. FT.	2,942	2,942
4,257 SQ. FT.	1,567 SQ. FT.	4,509	4,509
	4,509 SQ. FT.		

Tritium System Demolition and Disposal
Figure 3