

Office of Basic Energy Sciences

Bindu Nair, Associate Director
Andrew Schwartz, Deputy Associate Director

BES Budget and Planning
 Kara Beles, Financial Management
 Donetta Herbert, Financial Management
 Adam Kinney, Senior Technical Advisor
 (Vacant, Senior Technical Advisor)

BES Operations
 Teresa Crockett, Program Analyst
 Robin Hayes, Program Manager and EFRC Team Co-Lead (A)
 Kerry Hochberger, Program Analyst / BESAC*
 Angie Thevenot, Program Analyst
 Aaron Stone, AAAS Fellow
 (Vacant, Senior Technical Advisor)

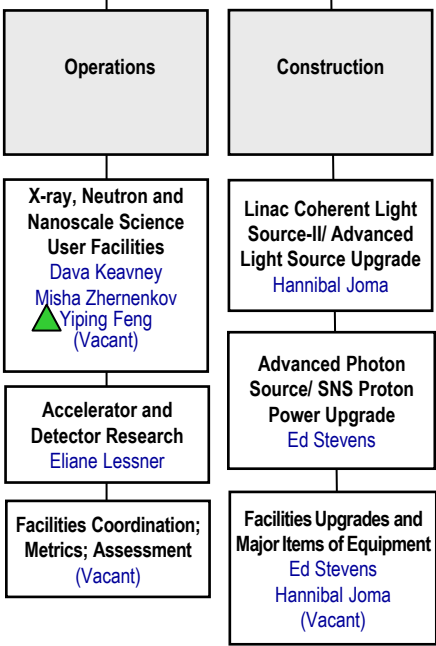
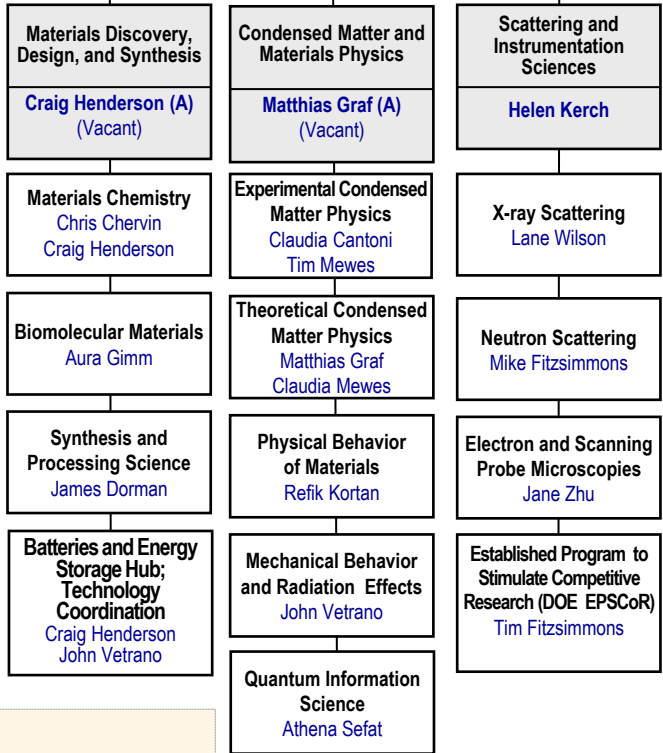
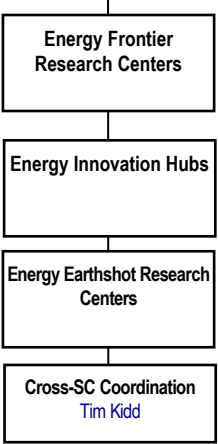
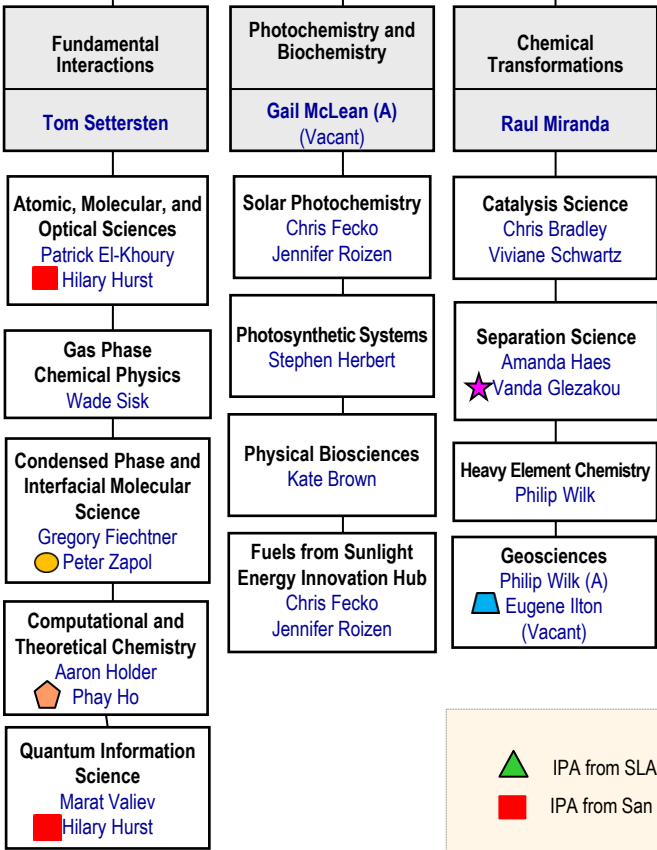
* Basic Energy Sciences Advisory Committee

Chemical Sciences, Geosciences, and Biosciences Division
Gail McLean, Director
 Gregory Fiechtner, EFRC Team Co-Lead (A)
 (Vacant)

Collaborative Research Division
Gail McLean, Acting Director

Materials Sciences and Engineering Division
Andrew Schwartz, Acting Director
 John Vetrano, EFRC Team Co-Lead (A)
 Shawn Chen

Scientific User Facilities Division
Andrew Schwartz, Acting Director
 Rocío Meneses, Program Support Specialist



LEGEND

- IPA from SLAC
- IPA from San Jose State
- Detailee (50%) from ORNL
- Detailee (50%) from ANL
- Detailee (50%) from PNNL
- Detailee (50%) from ANL
- (A) Acting

January 2025